

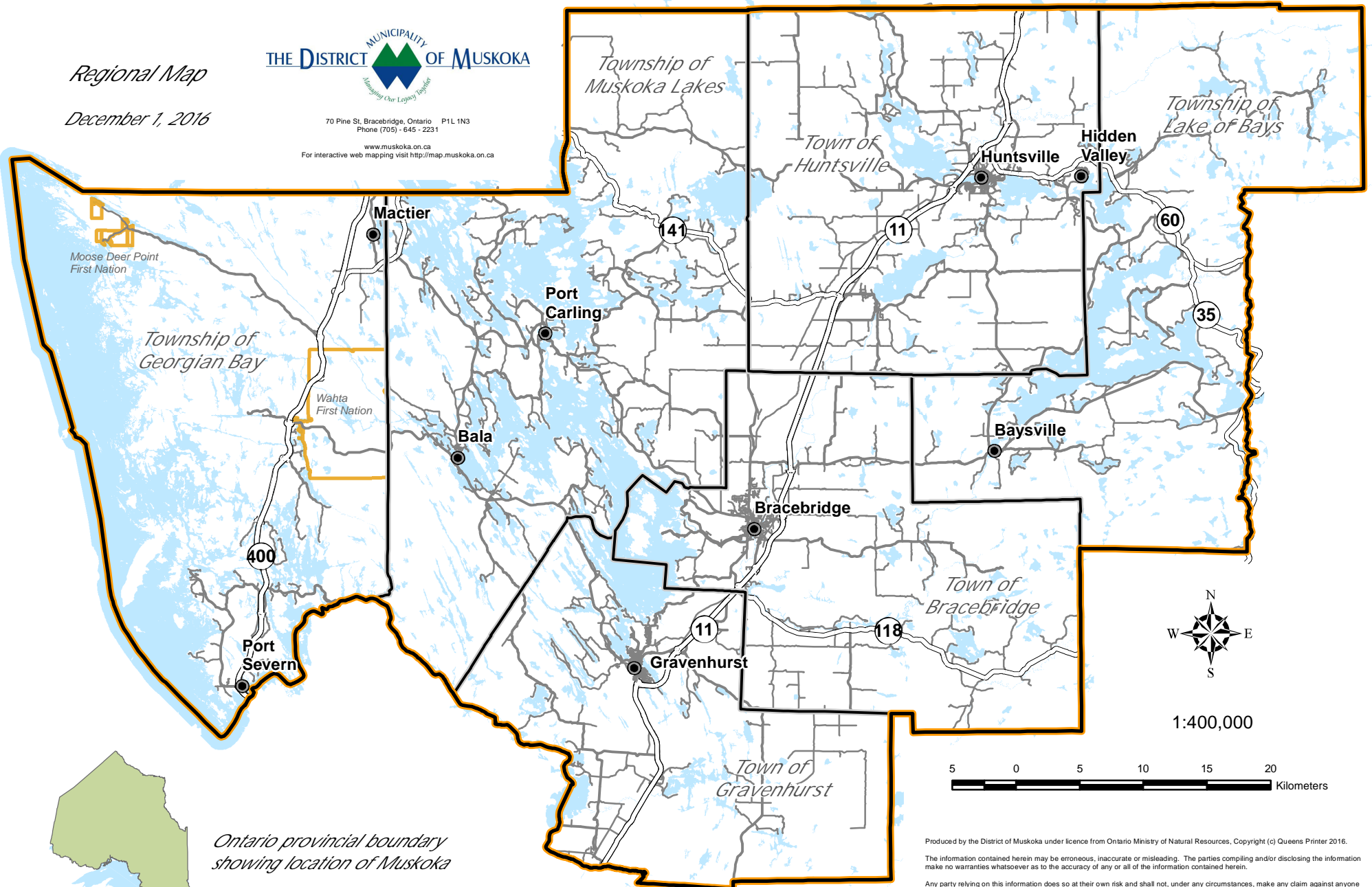
The District Municipality of Muskoka

Regional Map

December 1, 2016



70 Pine St, Bracebridge, Ontario P1L 1N3
 Phone (705) • 645 • 2231
www.muskoka.on.ca
 For interactive web mapping visit <http://map.muskoka.on.ca>



Moose Deer Point
 First Nation

Township of
 Georgian Bay

Wahta
 First Nation

Township of
 Muskoka Lakes

Town of
 Huntsville

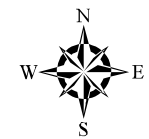
Township of
 Lake of Bays

Town of
 Bracebridge

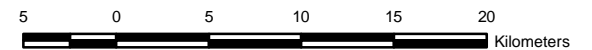
Town of
 Gravenhurst



*Ontario provincial boundary
 showing location of Muskoka*



1:400,000



Produced by the District of Muskoka under licence from Ontario Ministry of Natural Resources, Copyright (c) Queens Printer 2016.

The information contained herein may be erroneous, inaccurate or misleading. The parties compiling and/or disclosing the information make no warranties whatsoever as to the accuracy of any or all of the information contained herein.

Any party relying on this information does so at their own risk and shall not, under any circumstances, make any claim against anyone on the grounds that the information was erroneous, inaccurate or misleading.

This road network information has been generated or adapted from Ontario Road Network Database, a database built from source data provided by the Municipalities of Ontario to the Government of Ontario under licence.

The Ontario Road Network Database is the property of the Government of Ontario and is used under licence from the Government of Ontario.