



# OFFICIAL PLAN

- GEORGIAN BAY TOWNSHIP BOUNDARY
- HONEY HARBOUR COASTAL WATERFRONT COMMUNITY BOUNDARY
- HONEY HARBOUR COMMUNITY AREA
- PORT SEVERN URBAN CENTRE BOUNDARY

### PROVINCIAL ROADS

- CLASS I

### DISTRICT ROADS

- CLASS A
- CLASS B
- CLASS C

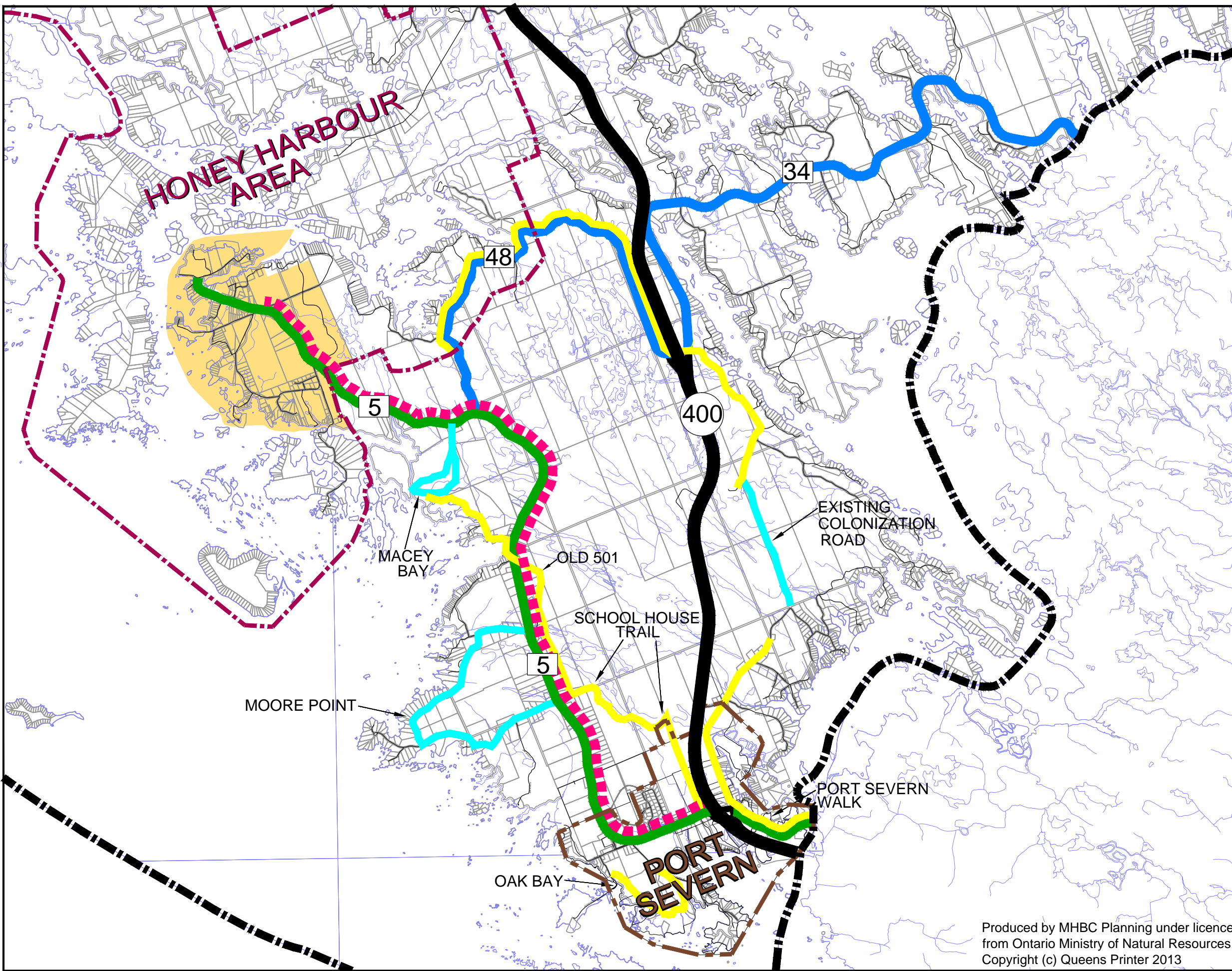
OTHER ROADS

### ACTIVE TRANSPORTATION ROUTES

- DISTRICT ACTIVE TRANSPORTATION ROUTES
- EXISTING ACTIVE TRANSPORTATION ROUTES
- PROPOSED ACTIVE TRANSPORTATION ROUTES

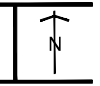
## OFFICIAL PLAN SCHEDULE J-1

### PORT SEVERN HONEY HARBOUR ACTIVE TRANSPORTATION ROUTES



Produced by MHBC Planning under licence from Ontario Ministry of Natural Resources, Copyright (c) Queens Printer 2013

SCALE 1:50,000  
0 250 500 750 1000 1250 1500



Date: March 17, 2014