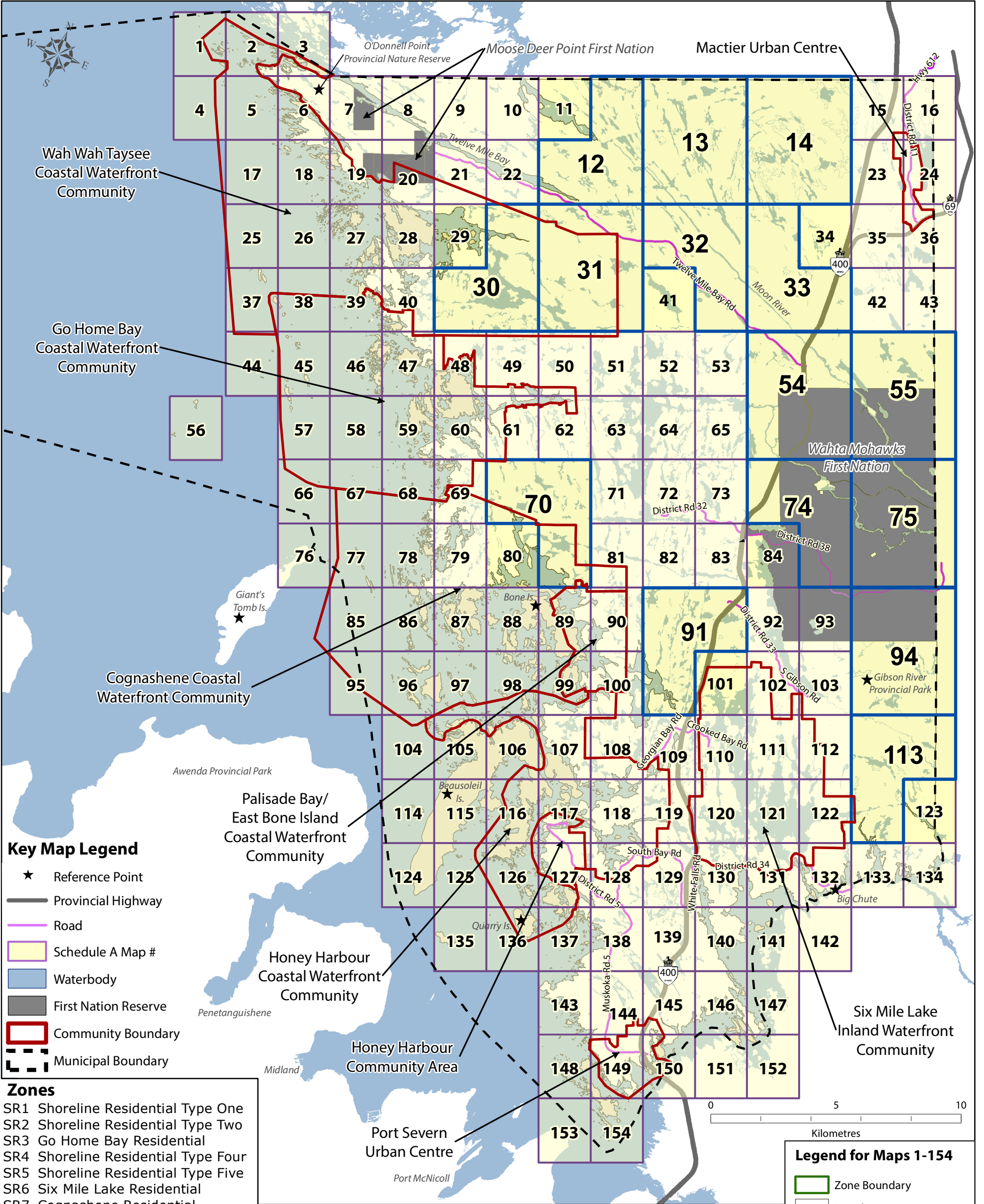




Township of Georgian Bay

Zoning By-law 2014-75

Key Map to Schedule 'A'



Key Map Legend

- ★ Reference Point
- Provincial Highway
- Road
- Schedule A Map #
- Waterbody
- First Nation Reserve
- Community Boundary
- Municipal Boundary

Zones

- | | | |
|--|-------------------------------------|--|
| SR1 Shoreline Residential Type One | RM1 Residential Multiple Type One | MX Extractive Industrial |
| SR2 Shoreline Residential Type Two | RM2 Residential Multiple Type Two | WD Waste Disposal |
| SR3 Go Home Bay Residential | RM3 Residential Multiple Type Three | I Institutional |
| SR4 Shoreline Residential Type Four | RM4 Residential Multiple Type Four | RU Rural |
| SR5 Shoreline Residential Type Five | C1 General Commercial | OS1 Open Space |
| SR6 Six Mile Lake Residential | C2 Restricted Commercial | OS2 Golf Course |
| SR7 Cognashene Residential | C3 Highway Commercial | CL Crown Land |
| SRI1 Shoreline Residential Island Type One | CT1 Tourist Commercial Type One | LS Lakeside Zone |
| SRI2 Shoreline Residential Island Type Two | CT2 Tourist Commercial Type Two | EP1 Environmental Protection Type One |
| SRI3 Go Home Bay Shoreline Residential Island Zone | CM1 Marine Commercial Type One | EP2 Environmental Protection Type Two |
| SRI4 Shoreline Residential Island Type Four | CM2 Marine Commercial Type Two | EP-PSW Environmental Protection - Provincially Significant Wetland |
| SRI5 Shoreline Residential Island Type Five | CM3 Marine Commercial Type Three | EP-W Environmental Protection - Wetland |
| SRI7 Cognashene Shoreline Residential Island Zone | CM4 Marine Commercial Type Four | FH1 Fish Habitat - Type One |
| R1 Residential Type One | ML Marine Landing | NSC Natural State Conservation |
| R2 Residential Type Two | M Industrial | NSI Natural State Island Zone |
| R3 Residential Type Three | | |
| R4 Residential Type Four | | |
| R5 Residential Type Five | | |
| RMH Residential Mobile Home | | |
| BR Back Lot Residential | | |

Legend for Maps 1-154

- Zone Boundary
- Parcels
- Waterfront Community / Settlement Area Boundary
- First Nation Reserve
- Municipal Boundary
- Tadenac Ecosystem Special Policy Area Overlay Zone